

Tips/Troubleshooting for Presentation

Meeting link: into your web browser
<https://us02web.zoom.us/j/87988299146>

Or go to: <https://zoom.us/join>
Input Meeting ID: 879 8829 9146

Moonwalkenergyfacility@algonquinpower.com

www.Moonwalkenergyproject.com

Computer Audio Trouble?

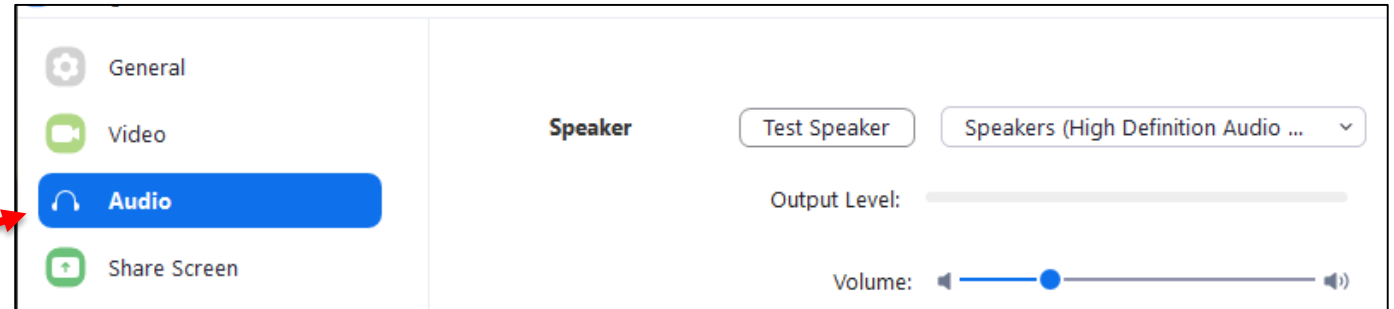
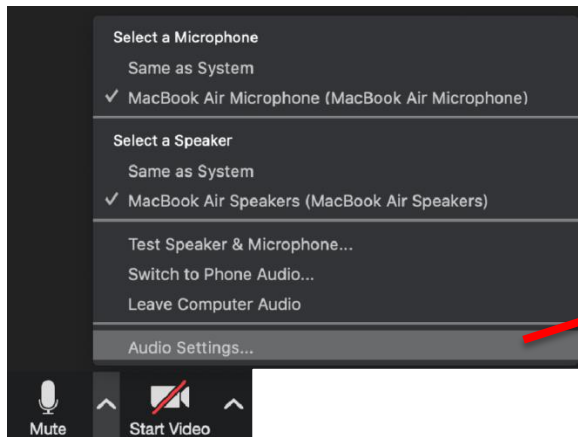
- Join by phone in addition to Screen Share or
- Check Speaker Selection or Zoom Audio Settings

Dial in by Phone with any of these numbers:

1-646-558-8656 1-301-715-8592

1-669-900-9128 1-312-626-6799

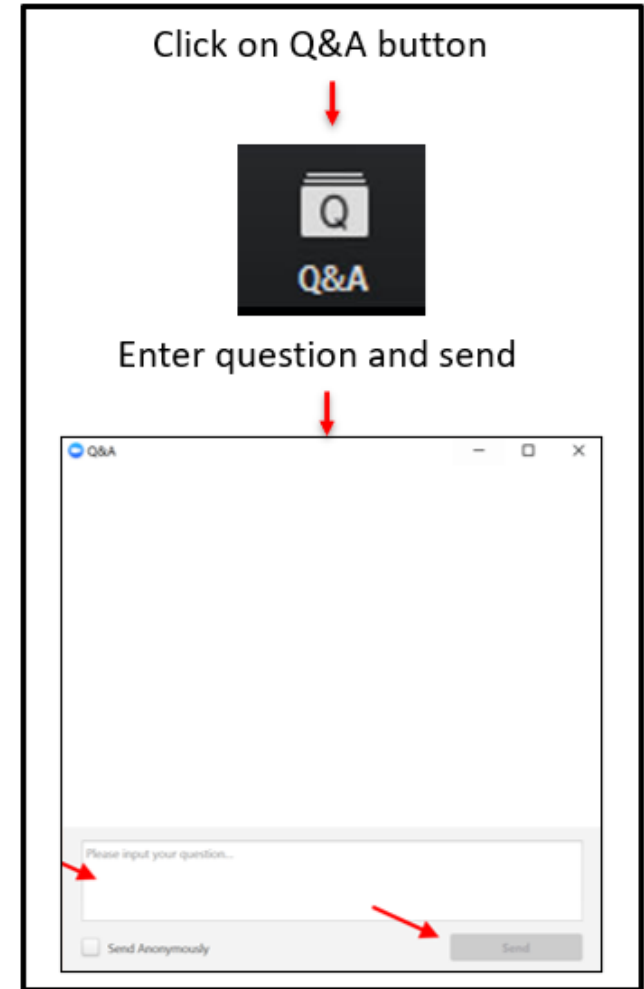
1-253-215-8782 1-346-248-7799



Presentation Interaction

Welcome to the presentation! In order to make today's session as seamless as possible for all our attendees please take note of the following:

- You can see us, but we can't see or hear you
- There is no interactive portion to the presentation other than the Q&A portion which will be conducted at the end of the session
- Please use the Chat button at the bottom of the screen to type in your questions at any time : we will be compiling the questions throughout the presentation
- Once the presentation is complete, we will be responding to as many questions as possible
- If your questions are not answered during the presentation, agents have been in the field and will continue to be until **March 14, 2021**. Their contact information will be at the end of the presentation – please reach out to them to set up in person meetings



Liberty Power



Moonwalk Energy Facility



Proposed Wind and Solar Project, Auglaize County



Agenda

1. Introductions
2. Safety Moment
3. Who we are: About Liberty Power and Utilities Corp
4. What we are doing: Proposing up to a 300MW Wind & Solar project *final wind/solar composition to be determined
5. Proposed Project Details and Area
6. How the Community Benefits
7. Engagement process
8. Compensation
9. Landowner Lease Changes
10. Next Steps
11. Q&A



Introductions

Adam Greene
Site Operator
Liberty Power



Brett Manzara
Senior Manager
Land and Stakeholders
Liberty Power



Tom Healy
Project Developer
Liberty Power



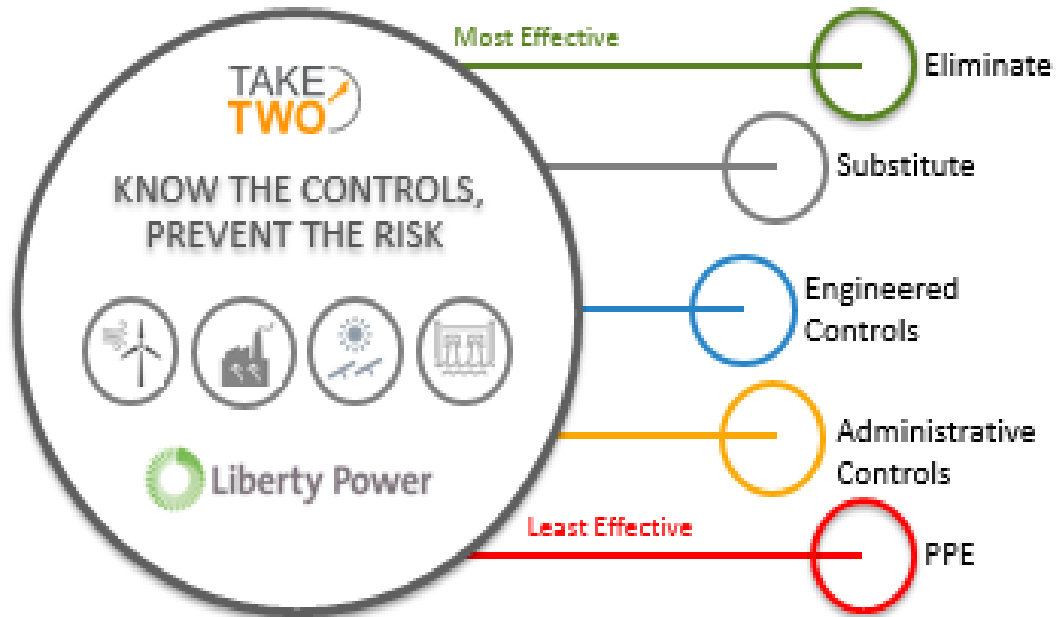
Sean Taylor
Regional Manager
Renewables
LandSolutions



Safety Moment



Avoid:
Rushing
Fatigue
Frustration
Complacency



- Avoiding unnecessary stops from home to work and other places
- Follow your State current directives
- Self Isolating
- Keep up to date with inventory of barrier devices such as masks and hand sanitizer

Maintain good ventilation in workplace, vehicles, and at home.

While at any Liberty location, please apply the following protective measures to keep you, our employees, and our customers' safe during your visit:

Social distancing – keep a safe distance between yourself and others (6 feet)	Wash your hands frequently with soap and water or alcohol-based rub	Avoid touching your face and do not shake hands	Avoid touching common surfaces (e.g. open door handles with a paper towel)	Cover your mouth and nose with your elbow or tissue when you cough or sneeze, then dispose of the used tissue immediately.



Who We Are – North American Operations & Development

Algonquin Power & Utilities Corp. (APUC) was established in 1988 as a developer of small hydro projects in Ontario.

APUC was publicly listed as a common share on the Toronto Stock Exchange in 1997 and in 2016, was publicly listed as a common share on the New York Stock Exchange.

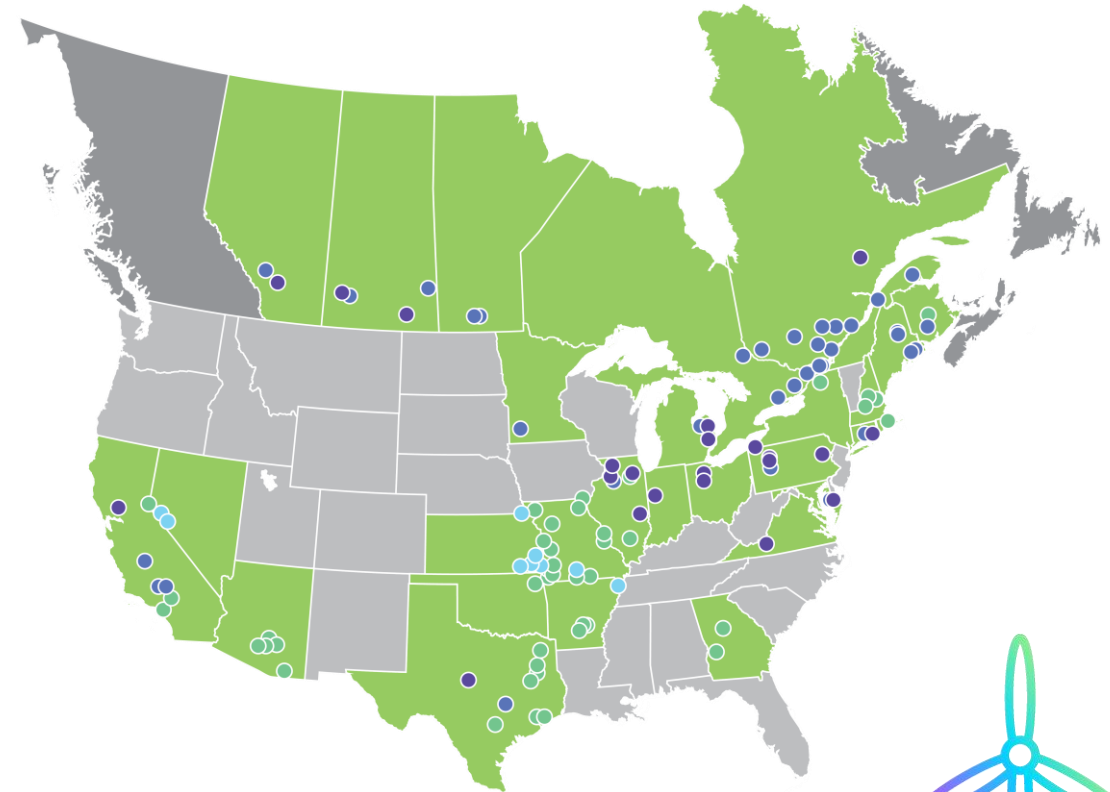
Since then, Algonquin has expanded into the utility business through Liberty Utilities, and has become a market leader in renewable generation through Liberty Power. APUC is located in 16 states and 6 provinces with approximately 2400 employees in total across the company



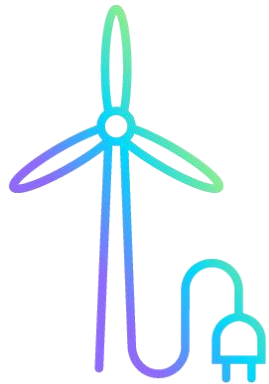
Liberty Utilities provides regulated water, natural gas, and electric utility services to over 800,000 customers through operations in 13 U.S. states.



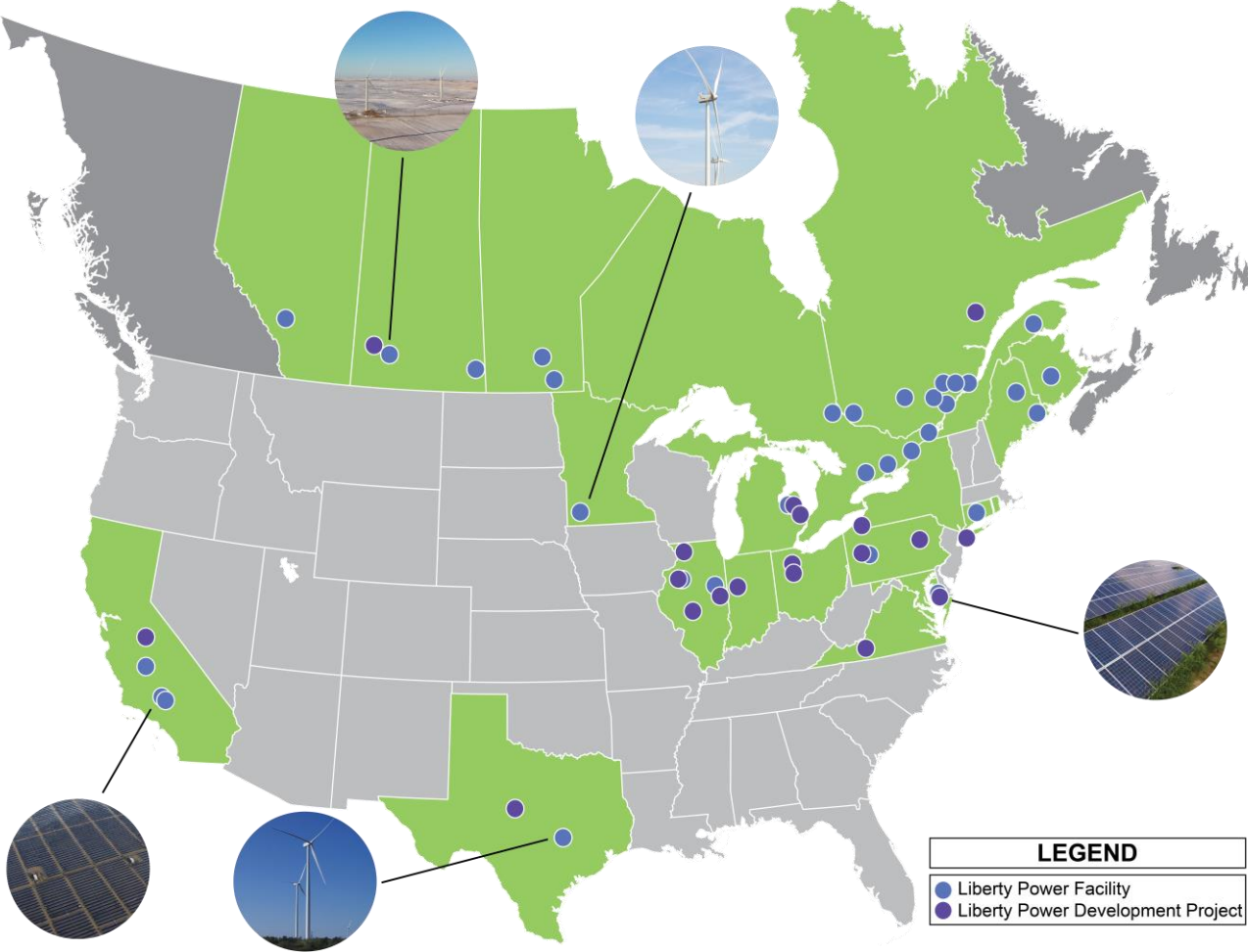
Liberty Power Co. owns and has interests in a portfolio of North American renewable and clean energy power generating facilities representing over 1.5 GW of installed capacity.



LEGEND	
●	Transmission and Distribution Utility
●	Rate-based Generation
●	Operating Facility
●	Development Project



Who we are – Continued



300 MW Proposed Windfarm
Sanilac County, MI
(Riverbend)

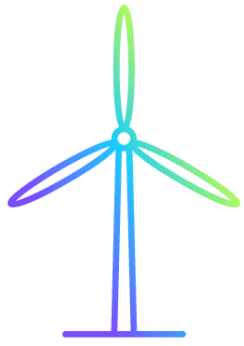


150 MW Windfarm
Bad Axe, MI
(Deerfield)

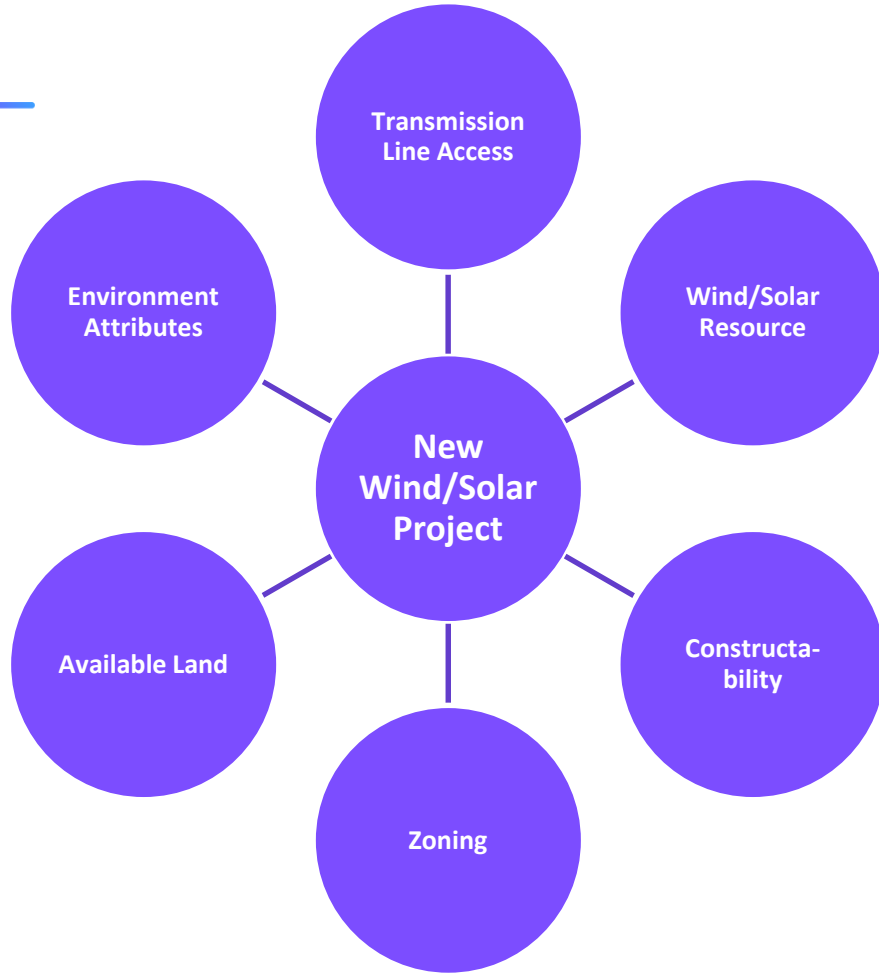


90 MW Proposed Windfarm
Bad Axe, MI
(Deerfield II)





Developing a Wind & Solar Project – Why Auglaize County?



Our focus is on building mutually beneficial and lasting relationships with the community through our long-term investments in assets



Proposed Project Details – Wind Generation Facilities

- **Number of Turbines:** Proposing between 200–300MW of wind capacity and targeting between 50 to 100 turbines depending on turbine size
- **Turbine Capacity:** Turbine technology is continuously evolving however we are currently targeting turbines between 3MW and 7MW in size
- **Turbine Tip Height:** Proposed range between 499–660ft
- **Setbacks:** We are working diligently with local officials to understand setbacks and ensure we comply with all regulatory requirements

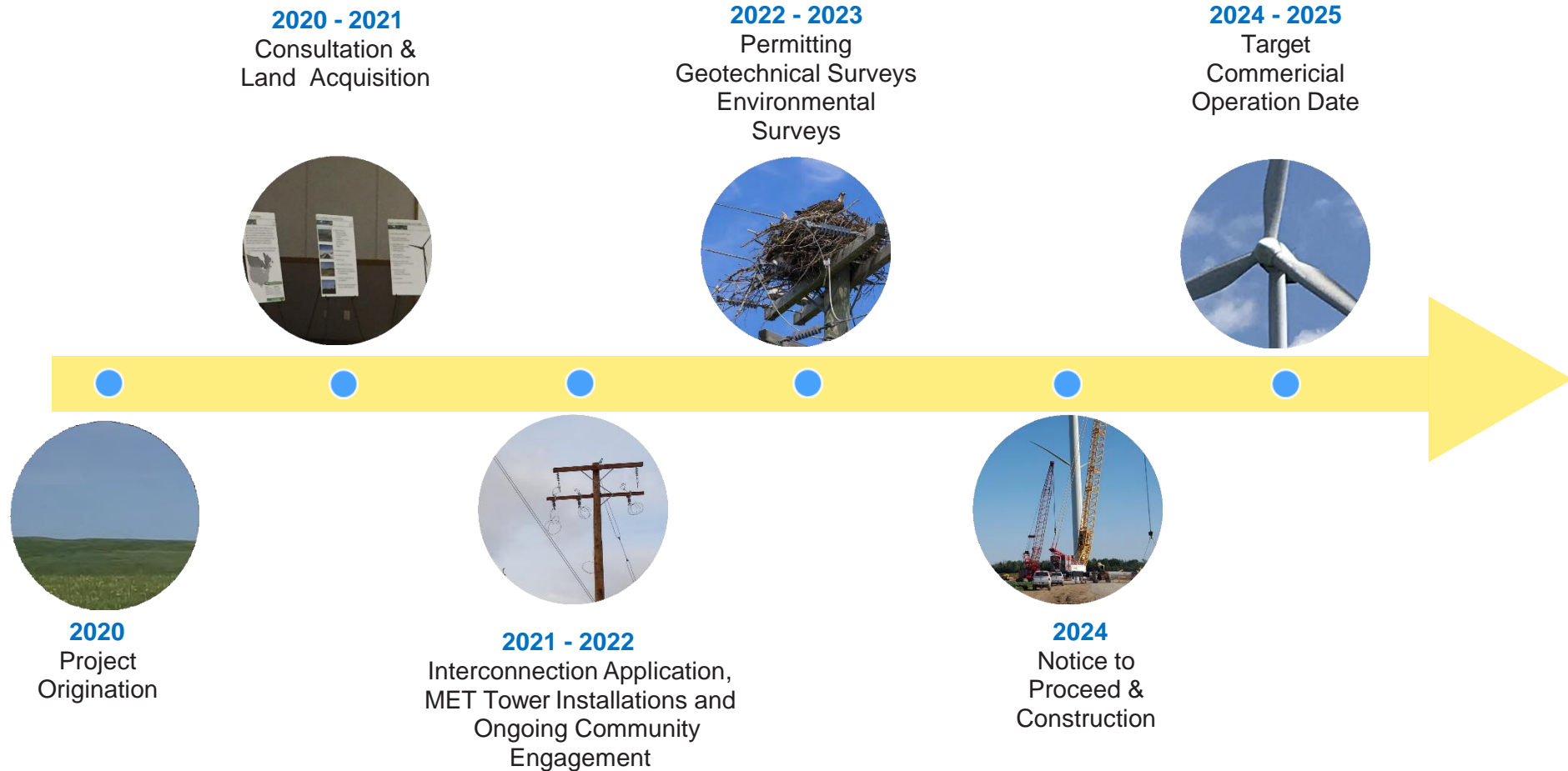


Proposed Project Details – Solar Generation Facilities

- **Size of Solar Facility:** Proposing up to 100MW of solar installed capacity depending on constructible acres.
- **Solar Panel Capacity:** Solar panel technology is continuously evolving, and final target size is yet to be determined.
- **Solar Installation Height:** Solar panels are typically installed between 3-5 ft. from ground level and range in size depending on capacity.
- **Setbacks:** We are working diligently with officials to understand setbacks and ensure we comply with all regulatory requirements.
- Final combination of wind and solar generation to be determined.



Developing a Wind & Solar Project- What are we Doing?



How We Engage With The Community



Meet with local officials



Host a public information session



Consultation program



Landowner dinners and local office



How does the community benefit

TAX REVENUE

- Increased contribution to Township & County tax revenue & school boards.

EMPLOYMENT

- Employment opportunities during construction and the projects operations phase.
- Example: The Sugar Creek Wind Project in Logan County, IL employs 200-250 people currently during construction & estimates 10-17 permanent full-time jobs during operations.

CONTRACT OPPORTUNITIES

- Economic offshoots for local businesses.

LAND USE

- Allows land to remain in agricultural use.
- Example:
 - Wind: 3-5 acres of space required for the construction of a turbine & during operation; the wind turbine & pad will occupy approximately 1-2 acres.
 - Solar: +- 7-10 acres per Megawatt (MW) of installed capacity will be required

CAPITAL INFRASTRUCTURE

- Potential local infrastructure improvements for project & construction, such as upgrades to public roads used for project.

CLEAN ELECTRICITY GENERATION

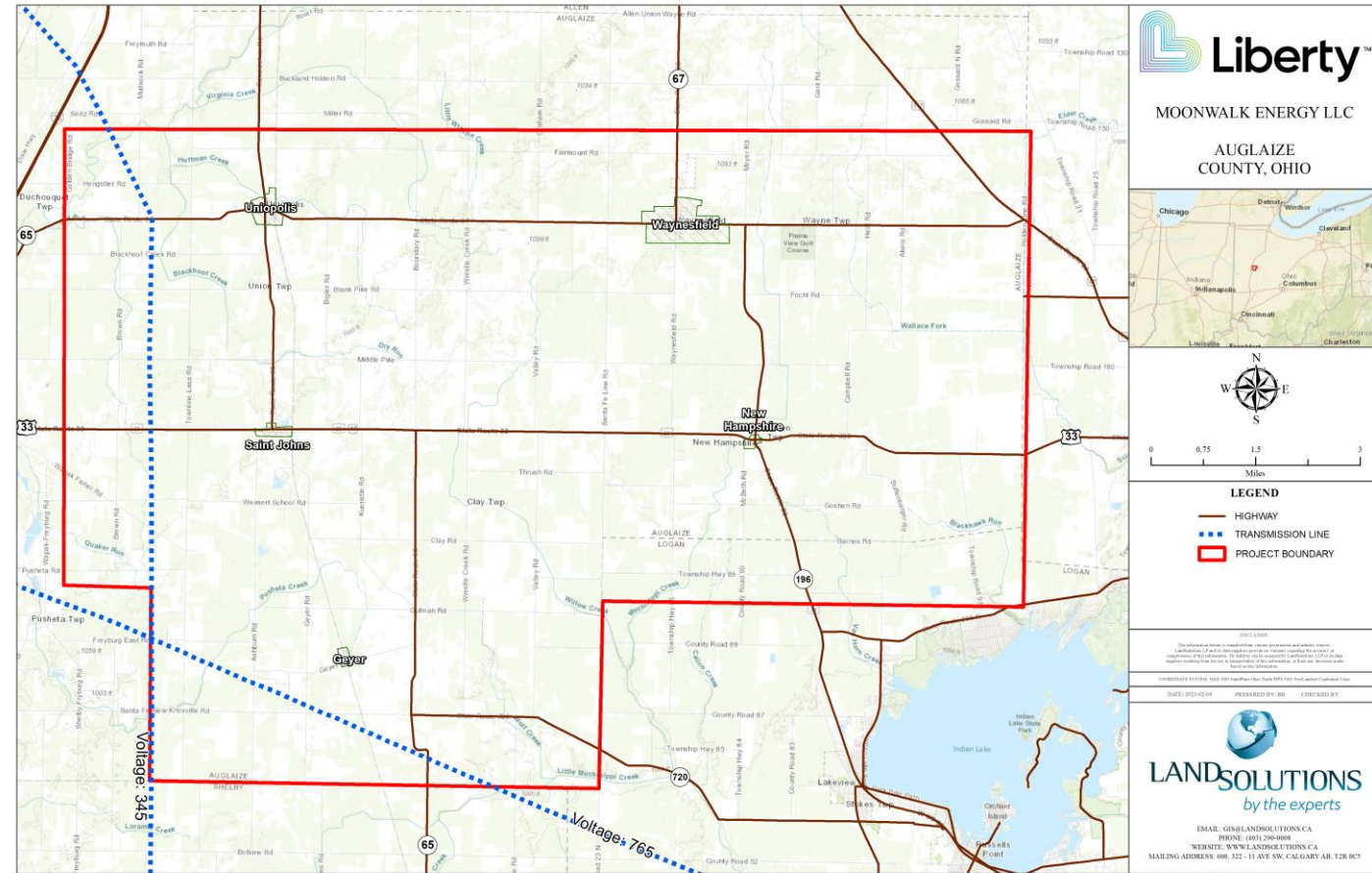
- Emissions-free electricity will be generated.
- Greenhouse gas emissions will be offset annually.

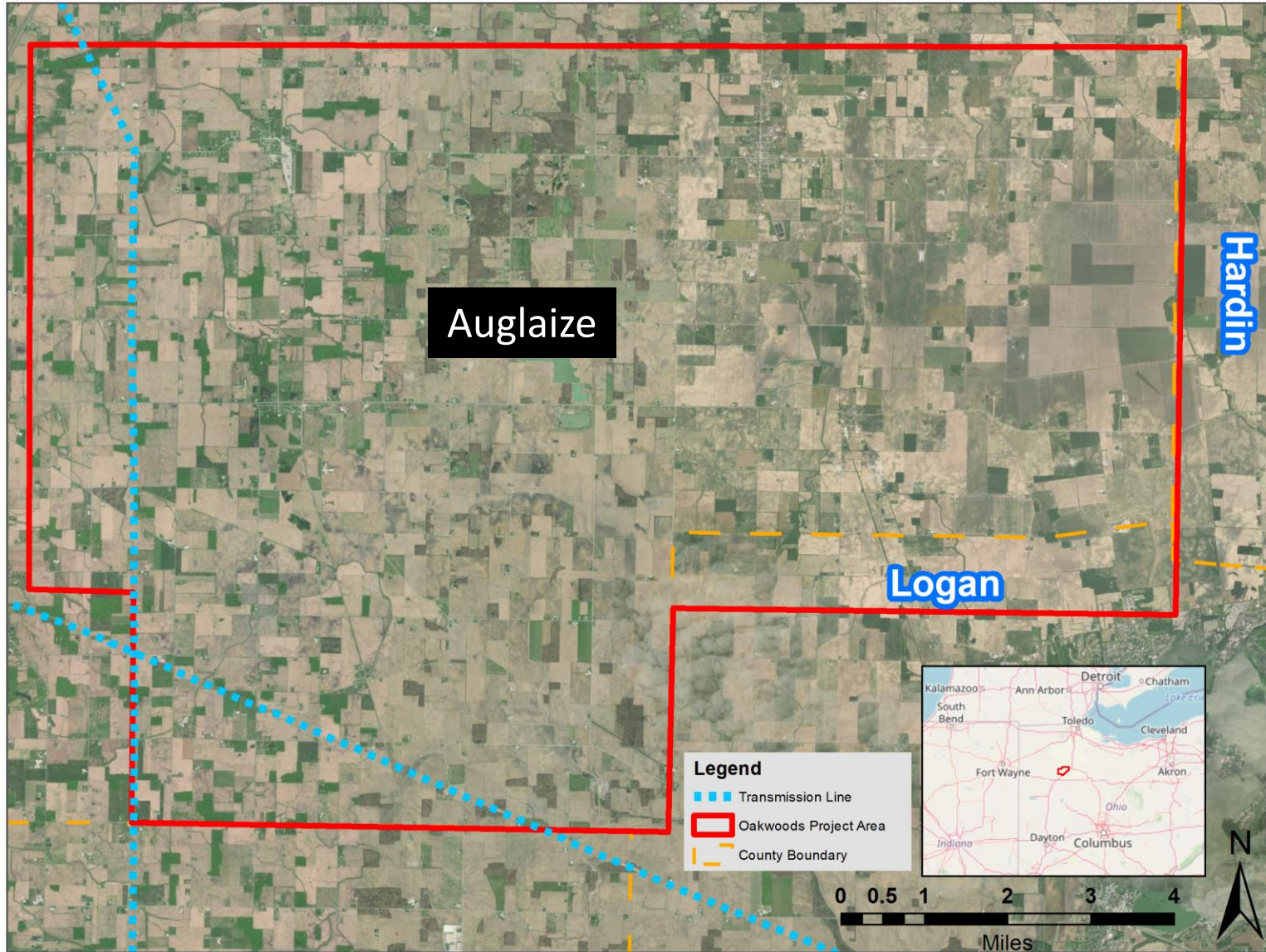


Engagement Process – Consultation Phase

- Met with Auglaize county planning official to discuss early-stage project details
- Sent letters, postcards and fact sheets to community members impacted by the project
- Initial webinar open house on November 12, 2020
- Meetings with/phone landowners within the project area to consult about the possibility of receiving an offer for the project
- Gathering information and feedback from stakeholders within the proposed area that would meet for lease offer discussions
- Launched website:

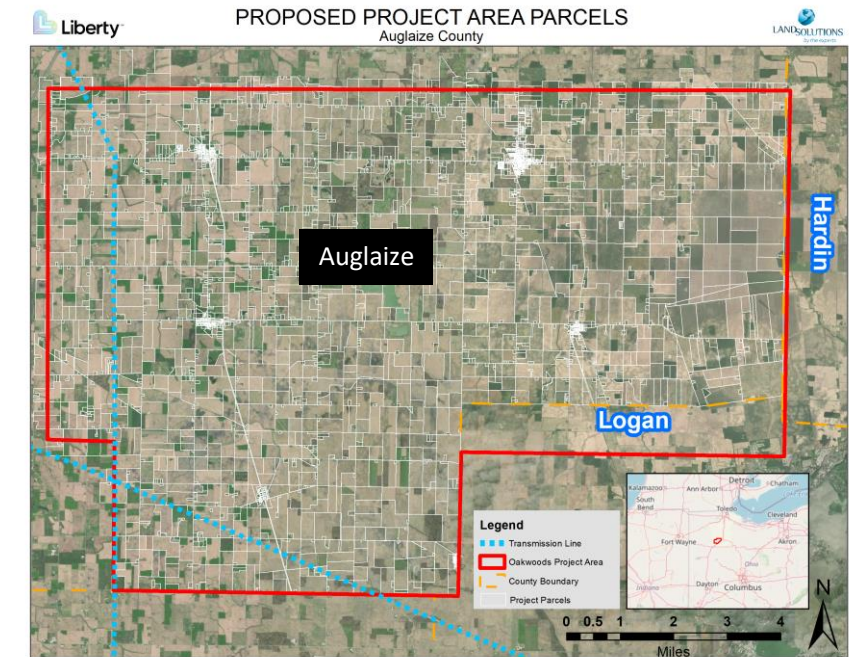
Available at www.moonwalkenergyproject.com





Landowner Interactions – Engagement Map

- As feedback is gathered from local landowners the below map will be used to determine project acceptance and feasibility.



* Above map is shown as example only

Landowner Compensation

WHAT DO WE COMPENSATE FOR: DEVELOPMENT TERM

- 5 year term.

CONSTRUCTION & OPERATIONS TERM

- Term of operating agreement will be 30 years operation term. Option to renew for 2 additional 10 year terms.

LEASE COMPENSATION CONSIDERATIONS

- Development Term
- Construction Term
- Operations Term
- MET Tower
- Transmission Lines
- Collector Lines/Access Roads

ESCALATOR

- Payments will have an escalator that will increase compensation by a defined % over the term of the lease.

CROP LOSS

- Affected landowners will be made whole for 100% crop loss if impacted.

IMPACTS TO DRAINAGE TILE

- All damaged tile will be repaired.



Landowner Lease Changes

WHAT DO WE COMPENSATE FOR:

DEVELOPMENT TERM

- Bumped up development term payment

ESCALATOR

- Escalator Payments have increased by defined % over the term of the lease.

ACCESS ROADS

- Landowner Consultation on the additional wording added to the agreement to support placement of access roads.

IMPACTS TO DRAINAGE TILE

- Increased the number of years for drainage tile monitoring and repairs.

OVERHEAD TRANSMISSION

- Removed mention of overhead transmission line in the lease



Next steps – Lease Opportunities



Company policy states that we must wear masks during meetings – we hope you understand



Thank you!



Please contact one of our agents to book a meeting:

• Sean Taylor
• Regional Manager - Renewables, LandSolutions
• (647) 463 9038 (Canada)
• seant@landsolutions.ca

• Justin Couch
• Surface Agent, LandSolutions
• (724) 630-5580

• Ken Taber
• Surface Agent, LandSolutions
• (607) 592-1661

• Neil Couch
• Surface Agent, LandSolutions
• (412) 874-4667

• George Cook
• Surface Agent, LandSolutions
• (518) 414-0820

For more information:
Visit: www.moonwalkenergyproject.com
Phone: 883-631-1059
Email: Moonwalkenergyfacility@algonquinpower.com

