

# Liberty Power



Proposed Wind and Solar Project, Auglaize County



Moonwalk Energy Facility

# Agenda

1. Introductions
2. Safety Moment
3. Who we are: About Liberty Power and Utilities Corp
4. What we are doing: Proposing up to a 300MW Wind & Solar project \*final wind/solar composition to be determined
5. Proposed Project details and Area
6. How the community benefits
7. Engagement process
8. Compensation
9. Next Steps
10. Q&A

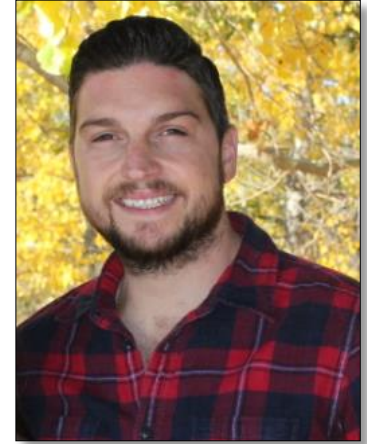


# Introductions

**Adam Loudon**  
**US Operations**  
**Regional**  
**Manager**  
Liberty Power



**Brett Manzara**  
**Senior Manager**  
**Land and**  
**Stakeholders**  
Liberty Power



**Tom Healy**  
**Project**  
**Developer**  
Liberty Power



**Matt Pasquinelli**  
**Senior Project**  
**Manager**  
LandSolutions

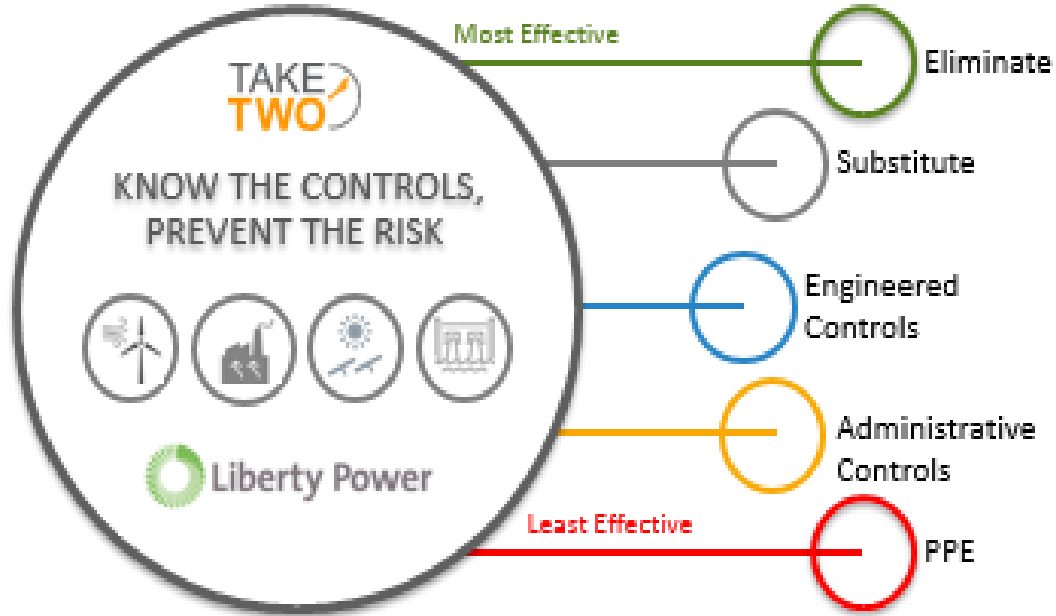




# Safety Moment



Avoid:  
Rushing  
Fatigue  
Frustration  
Complacency



- Avoiding unnecessary stops from home to work and other places
- Follow your State / Province current directives
- Self Isolating
- Keep up to date with inventory of barrier devices such as masks and hand sanitizer

Maintain good ventilation in workplace, vehicles, and at home.

While at any Liberty location, please apply the following protective measures to keep you, our employees, and our customers' safe during your visit:

Social distancing – keep a safe distance between yourself and others (6 feet)	Wash your hands frequently with soap and water or alcohol-based rub	Avoid touching your face and do not shake hands	Avoid touching common surfaces (e.g. open door handles with a paper towel)	Cover your mouth and nose with your elbow or tissue when you cough or sneeze, then dispose of the used tissue immediately.



# Who we are - North American Operations and Development

Algonquin Power & Utilities Corp. (APUC) was established in 1998 as a developer of small hydro projects in Ontario.

APUC was publicly listed as a common share on the Toronto Stock Exchange in 1997 and in 2016, was publicly listed as a common share on the New York Stock Exchange.

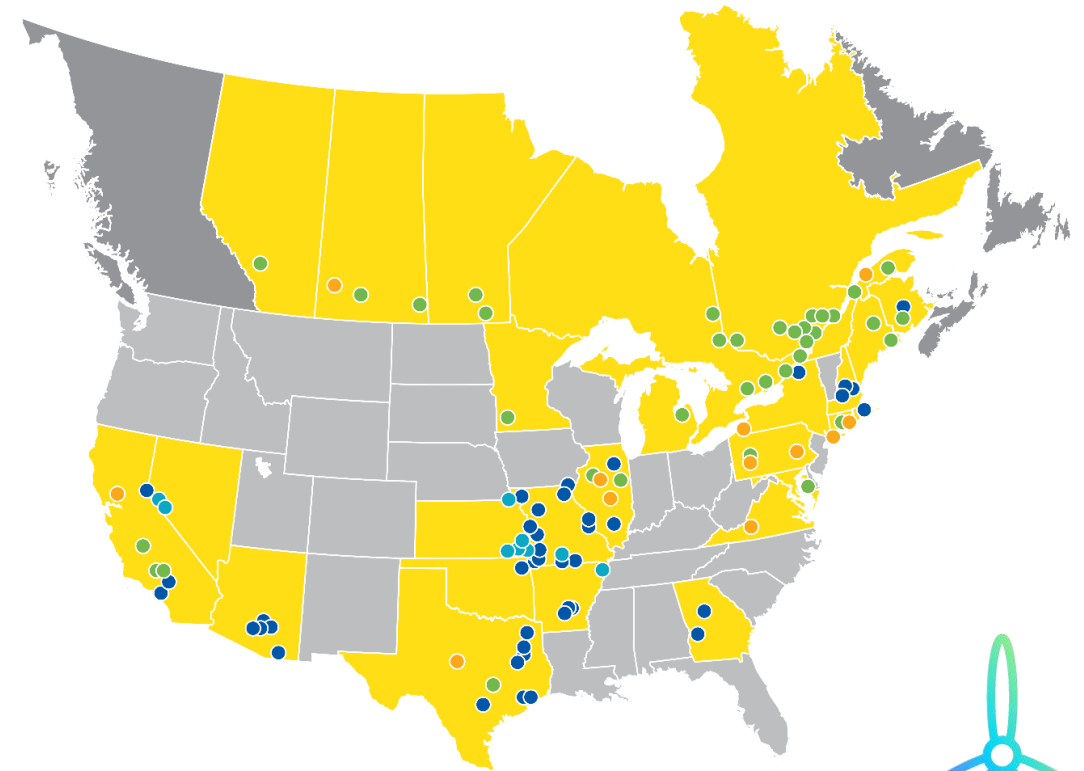
Since then, Algonquin has expanded into the utility business through Liberty Utilities, and has become a market leader in renewable generation through Liberty Power. APUC is located in 16 states and 6 provinces with approximately 2400 employees in total across the company



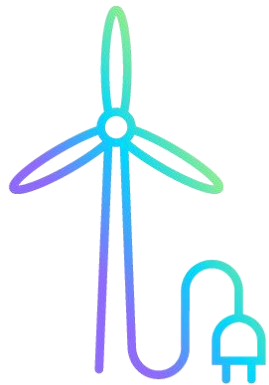
Liberty Utilities provides regulated water, natural gas, and electric utility services to over 800,000 customers through operations in 13 U.S. states.



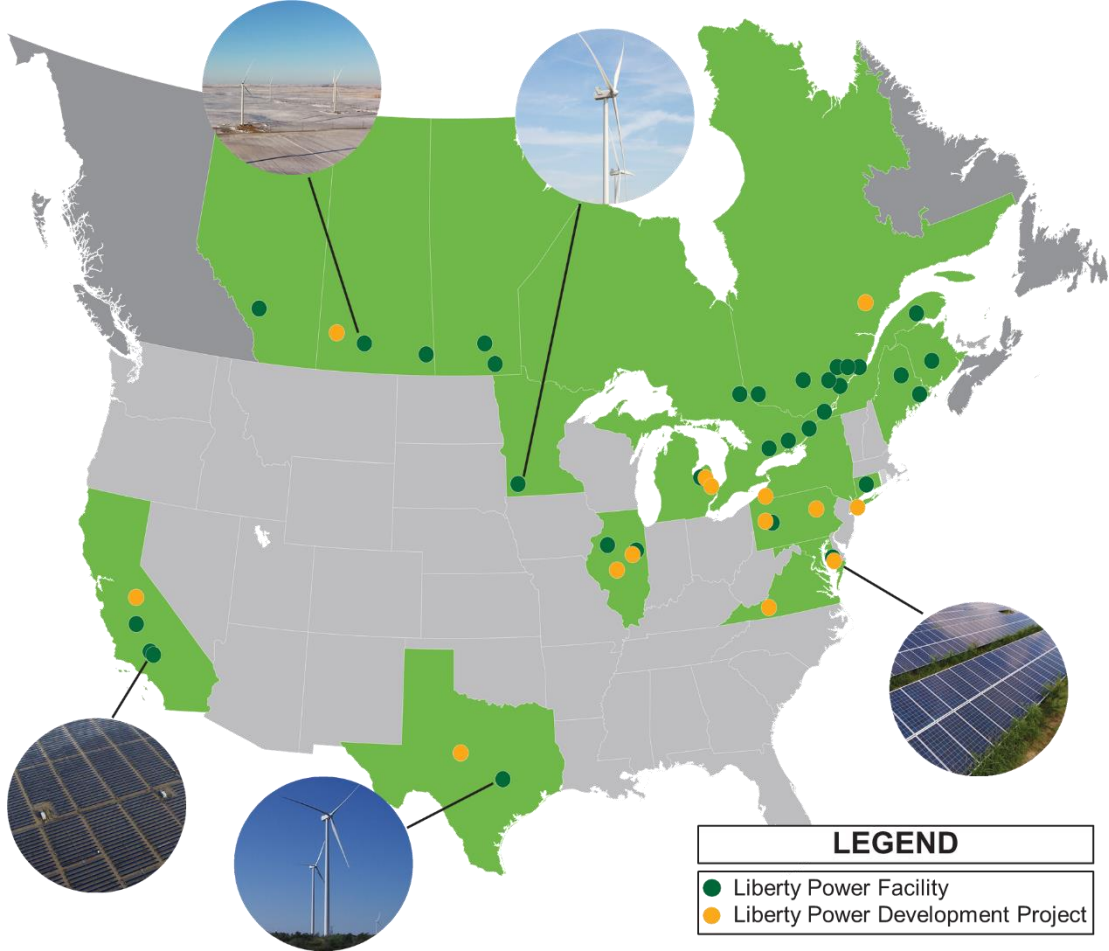
Liberty Power Co. owns and has interests in a portfolio of North American renewable and clean energy power generating facilities representing over 1.5 GW of installed capacity.



LEGEND	
●	Transmission and Distribution Utility
●	Rate-based Generation
●	Operating Facility
●	Development Project



# Who we are – Continued



300 MW Proposed Windfarm  
Sanilac County, MI  
(Riverbend)

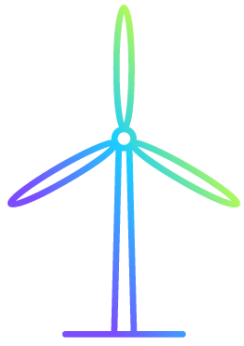


149 MW Windfarm  
Bad Axe, MI  
(Deerfield)



~100 MW Proposed Windfarm  
Bad Axe, MI  
(Deerfield II)





# Developing a Wind & Solar Project – Why Auglaize County?



Our focus is on building mutually beneficial and lasting relationships with the community through our long-term investments in assets





# Proposed Project Details – Wind Generation Facilities

- **Number of Turbines:** Proposing between 200 – 300MW of wind capacity and targeting between 50 to 100 turbines depending on turbine size.
- **Turbine Capacity:** Turbine technology is continuously evolving however we are currently targeting turbines between 3MW and 7MW in size
- **Turbine Tip Height:** Proposed range between 499 – 660ft
- **Setbacks:** We are working diligently with local officials to understand setbacks and ensure we are in compliance with all regulatory requirements.



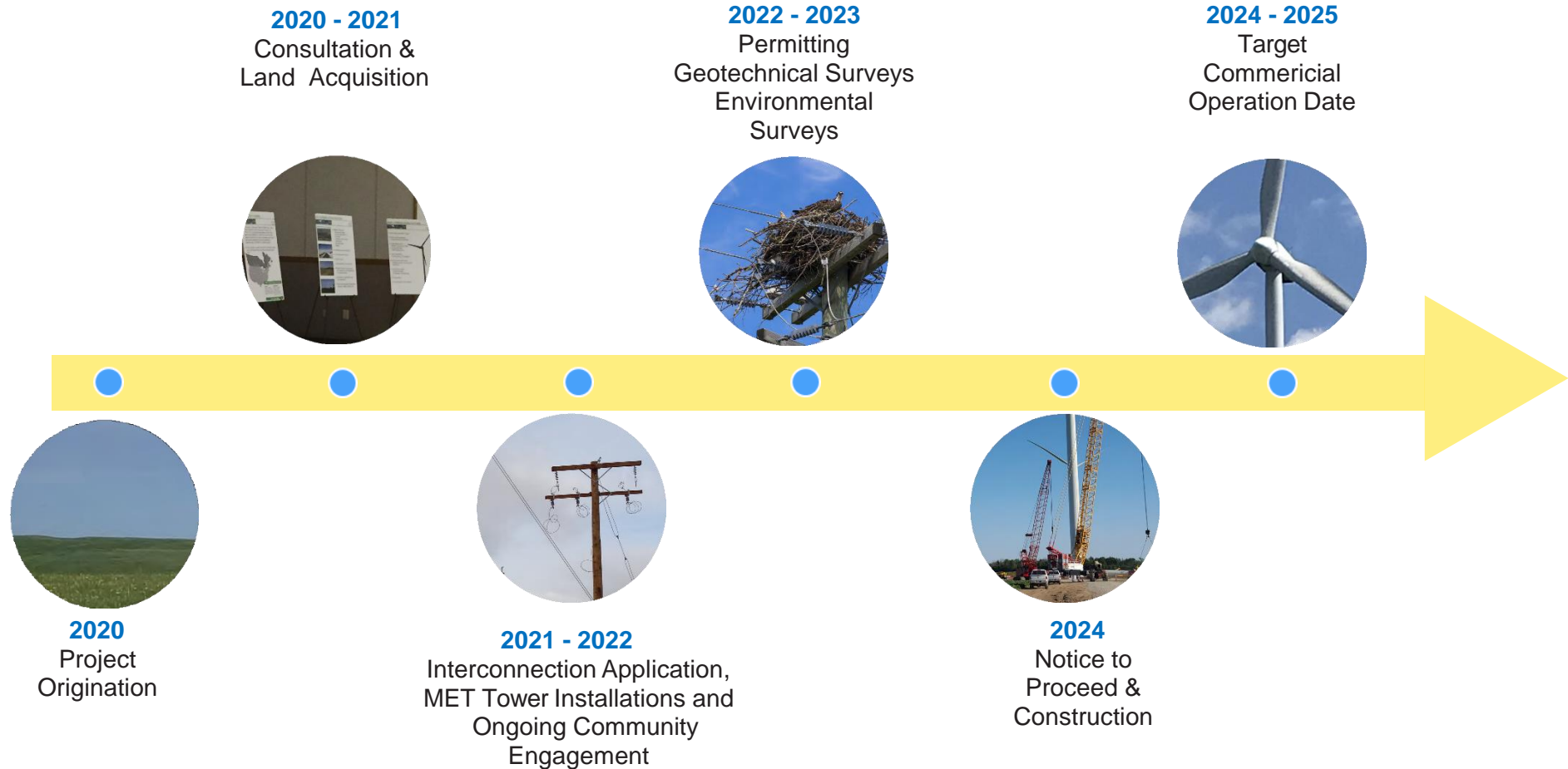


# Proposed Project Details –Solar Generation Facilities

- **Size of Solar Facility:** Proposing up to 100MW of solar installed capacity depending on constructable acres.
- **Solar Panel Capacity:** Solar panel technology is continuously evolving, and final target size is yet to be determined.
- **Solar Installation Height:** Solar panels are typically installed between 3-5 ft from ground level and range in size depending on capacity.
- **Setbacks:** We are working diligently with officials to understand setbacks and ensure we are in compliance with all regulatory requirements.
- Final combination of wind and solar generation to be determined.



# Developing a Wind & Solar Project– What are we Doing?



# How does the community benefit

## TAX REVENUE

- Increased contribution to Township & County tax revenue & school boards.

## EMPLOYMENT

- Employment opportunities during construction and the projects operations phase.
- Example: The Sugar Creek Wind Project in Logan County, IL employs 200-250 people currently during construction & estimates 10-17 permanent full-time jobs during operations.

## CONTRACT OPPORTUNITIES

- Economic offshoots for local businesses.

## LAND USE

- Allows land to remain in agricultural use.
- Example:
  - Wind: 3-5 acres of space required for the construction of a turbine & during operation; the wind turbine & pad will occupy approximately 1-2 acres.
  - Solar: +- 7-10 acres per Megawatt (MW) of installed capacity will be required

## CAPITAL INFRASTRUCTURE

- Potential local infrastructure improvements for project & construction, such as upgrades to public roads used for project.

## CLEAN ELECTRICITY GENERATION

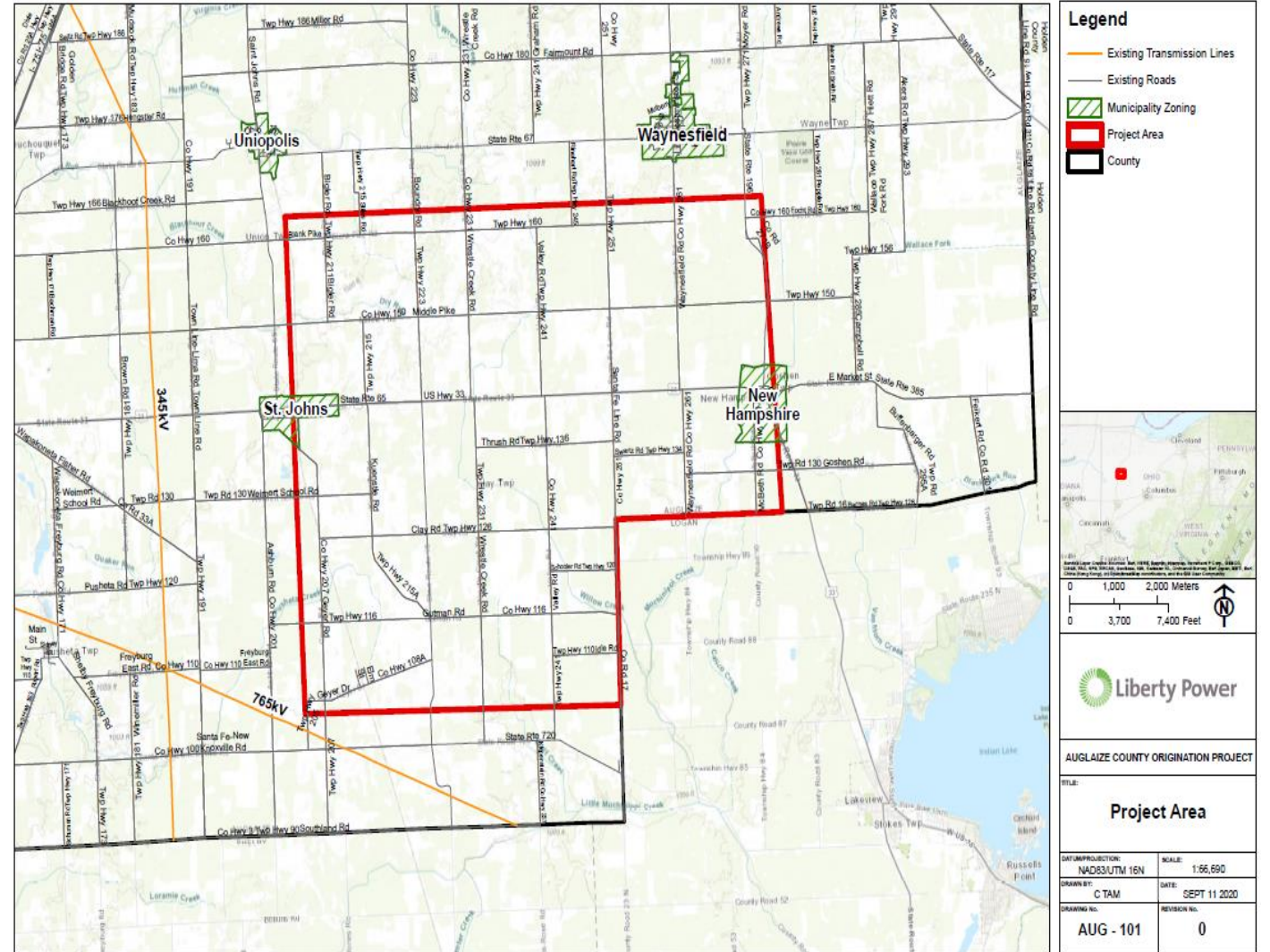
- Emissions-free electricity will be generated.
- Greenhouse gas emissions will be offset annually.



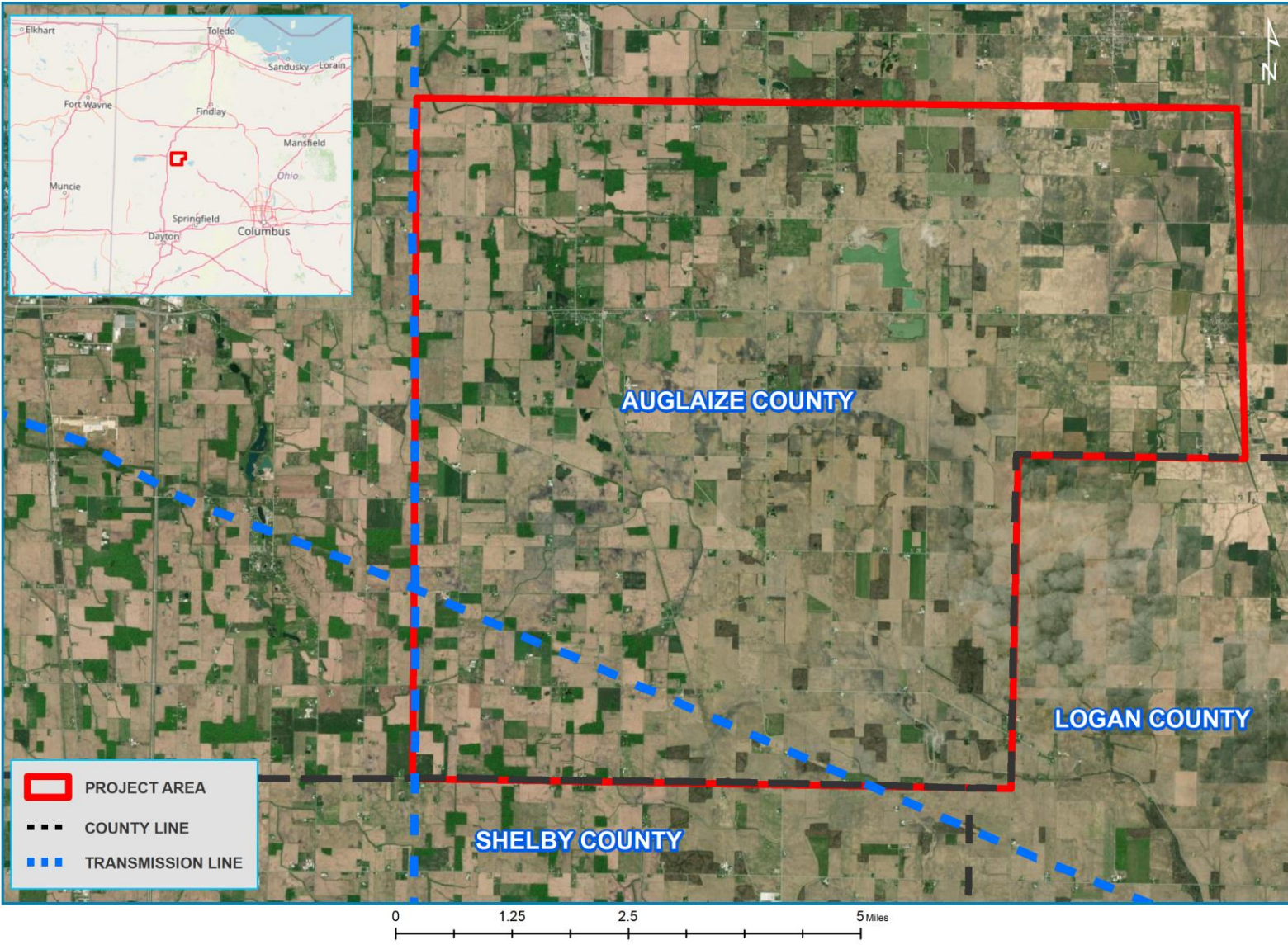


# Engagement Process – Consultation Phase

- Met with Auglaize county planning official to discuss early-stage project details
- Sent letters, postcards and fact sheets to community members impacted by the project
- Initial webinar open house on November 12, 2020
- Meetings with/phone landowners within the project area to consult about the possibility of receiving an offer for the project
- Gathering information and feedback from stakeholders within the proposed area that would meet for lease offer discussions
- Launched website: [www.moonwalkenergyproject.com](http://www.moonwalkenergyproject.com)

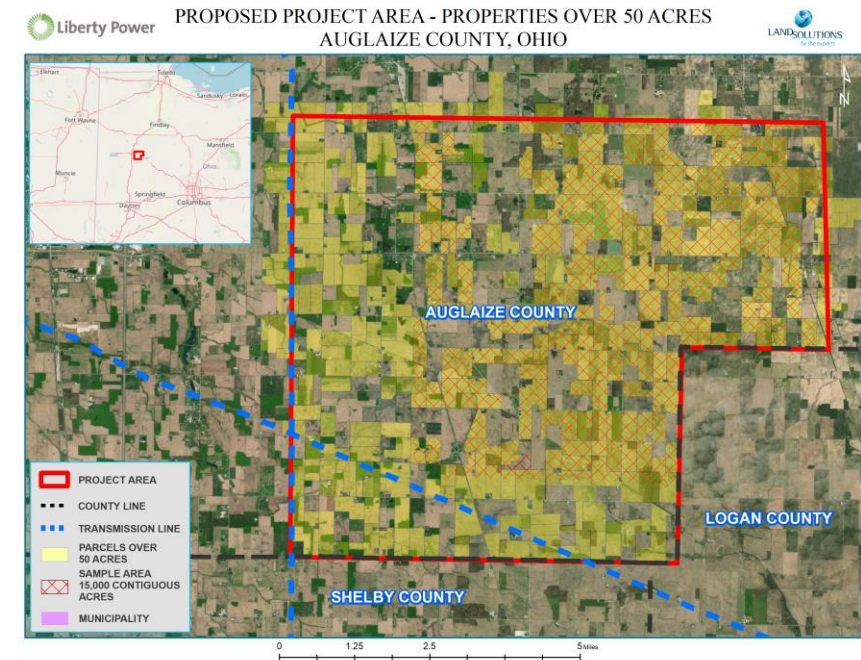






# Landowner Interactions – Engagement Map

- As feedback is gathered from local landowners the below map will be used to determine project acceptance and feasibility.



\* Above map is shown as example only



# Landowner Compensation

## WHAT DO WE COMPENSATE FOR: DEVELOPMENT TERM

- 5 year term.

## CONSTRUCTION & OPERATIONS TERM

- Term of operating agreement will be 30 years operation term. Option to renew for 2 additional 10 year terms.

## LEASE COMPENSATION CONSIDERATIONS

- Development Term
- Construction Term
- Operations Term
- MET Tower
- Transmission Lines
- Collector Lines/Access Roads

## ESCALATOR

- Payments will have an escalator that will increase compensation by a defined % over the term of the lease.

## CROP LOSS

- Affected landowners will be made whole for 100% crop loss if impacted.

## IMPACTS TO DRAINAGE TILE

- All damaged tile will be repaired.



# Next steps – Lease Opportunities



Company policy states that we must wear masks during meetings – we hope you understand



# Thank you!



Please contact one of our agents to book a meeting

- Matt Pasquinelli
- Senior Project Manager, LandSolutions
- (412) 512-5145

- Justin Couch
- Surface Agent, LandSolutions
- (724) 630-5580

- Ken Taber
- Surface Agent, LandSolutions
- (607) 592-1661

- Neil Couch
- Surface Agent, LandSolutions
- (412) 874-4667

For more information:  
Visit: [www.moonwalkenergyproject.com](http://www.moonwalkenergyproject.com)  
Phone: 883-631-1059  
Email: [Moonwalkenergyfacility@algonquinpower.com](mailto:Moonwalkenergyfacility@algonquinpower.com)

